

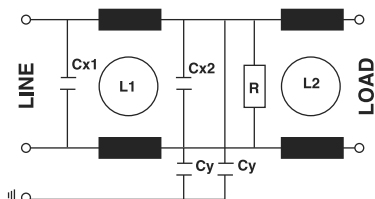
# Series AR35



These filters grant an high insertion loss of the symmetric and asymmetric noises, allowing in this way an effective protection of the electric components against the radiointerference and the emission of noises, in accordance with VDE rules.

I filtri di questa serie garantiscono una elevata attenuazione delle radiointerferenze simmetriche ed asimmetriche consentendo inoltre una efficace protezione per le apparecchiature sia delle radiointerferenze provenienti dalla linea che per l'immissione di disturbi in rete, in accordo con le norme VDE.

## Circuit diagram



**Electronics**  
**High Power**  
**Electromechanical**  
**Custom**

**ACTRONIC**

## Technical Specifications:

### Manufacture

Metal case, internal components sealed with self-extinguishing resin Vo

### Connections

Faston 6.3 x 0.8mm ( $\leq 20A$ )  
 Flexible leads M5 screws  
 Ground terminal connected to case

## Electrical specifications:

<b>Rated voltage (Vr)</b>	max. 250 Vac at 50/60 Hz
<b>Rated current (Ir)*</b>	referred to room temp.= 40°C
<b>Leakage current (IL)</b>	$\leq 0,6$ mA
<b>Voltage test (2s.)</b>	line to ground 3000 Vdc or 1800 Vac line to line 1700 Vdc
<b>Climatic category</b>	HPF (25/085/21) -25°C to +85°C

## Caratteristiche tecniche:

### Costruzione

Custodia metallica, componenti interni sigillati con resina autoestinguente Vo

### Terminali

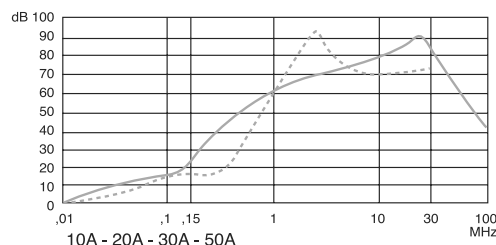
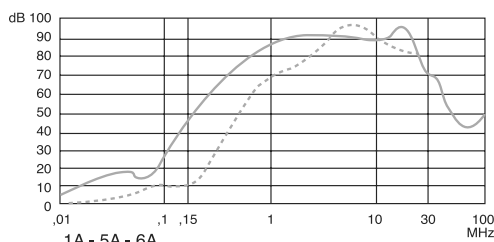
Faston 6.3 x 0.8mm ( $\leq 20A$ )  
 Cavi flessibili o viti da M5  
 Terminale di terra collegato alla custodia

## Caratteristiche elettriche:

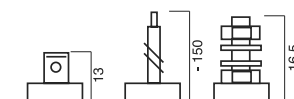
<b>Tensione nominale (Vr)</b>	max 250 Vac a 50/60Hz
<b>Corrente nominale (Ir) *</b>	riferita ad una temp.di 40°C
<b>Corrente di fuga (IL)</b>	$\leq 0,6$ mA
<b>Tensione di prova (2s.)</b>	linea e massa 3000 Vdc o 1800 Vac linea e linea 1700 Vdc
<b>Categoria climatica</b>	HPF (25/085/21) -25°C to +85°C

Code	IR(A)*	L1(mH)	L2(mH)	Cx1( $\mu$ F)	Cx2( $\mu$ F)	Cy(pF)	R(M $\Omega$ )	Case
AR35.1A	1	40	40	0.1	0.1	4700	1	A
AR35.6A	6	1	1	0.1	0.1	2500	1	F1
AR35.10A	10	0.5	0.5	0.1	0.1	2500	1	F2
AR35.20A	20	0.5	0.5	0.1	0.1	2500	1	B
AR35.30A	30	0.6	0.6	0.1	0.1	2500	1	B
AR35.50A	50	0.2	0.2	0.1	0.1	2500	1	F6

F = Faston, C = Leads, V = Screws.



— ASYMMETRICAL  
 - - - SYMMETRICAL



Available connections

## APPROVALS



ON REQUEST



## Dimensions:

See the page Dimensions  
 Consultare la pagina Dimensioni